

# LK29 系列

LK29 Series

金属螺旋弹簧联轴器 (定位螺丝固定式)

Spring Coupling (Setscrew Type)

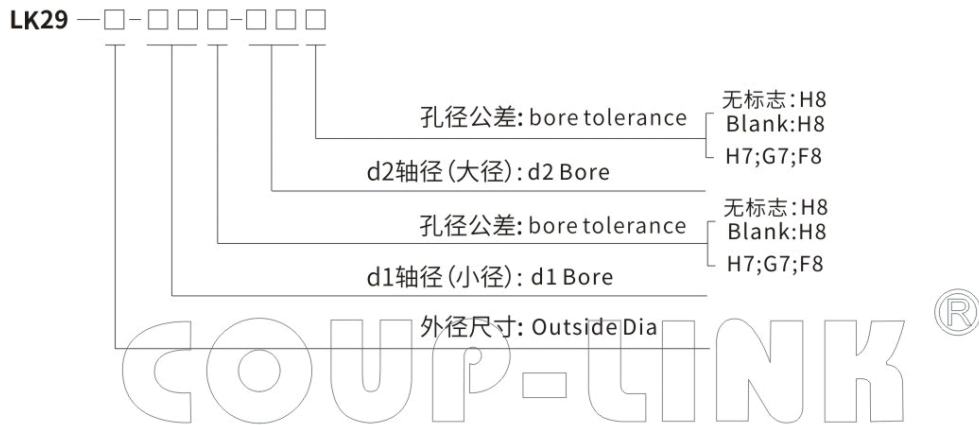
## 特点 Features

- 容许最大8°的角向偏差
- 高扭矩刚性
- 定位螺丝固定
- Allow max angular misalignment 8°
- High torque, high stiffness
- Setscrew type



主体: 锌合金材料  
Body: Casting Zinc Alloy

## 选型举例: Ordering Information



## 例: LK29-16-04H7-05F8

LK29: 系列号, 材料为锌合金

16: 外径尺寸: 16mm, 定位螺丝固定

04: d1孔径为: 4mm, 公差为H7

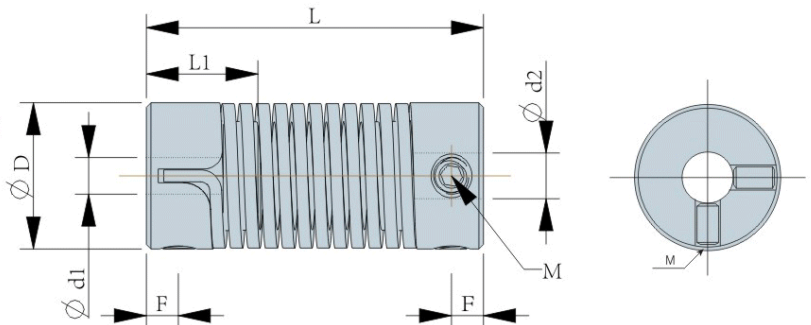
05: d2孔径为: 5mm, 公差为F8

孔径公称请按照d1 (小径) - d2 (大径) 的顺序标示

### Example: LK29-16-04H7-05F8

LK29: Series No, Material: Casting Zinc Alloy  
16: Outside Diameter: 16mm, Setscrew Type  
04: d1 Bore: 4mm, H7  
05: d2 Bore: 5mm, F8

Please mark the bore diameter in the order of d1 (minor diameter) - d2 (major diameter)



## 外型尺寸 Dimensions

单位 (unit): mm

| 型号<br>Model     | d1 · d2          |                  | ΦD | L  | F   | L1   | M  | 拧紧力矩<br>Tightening Torque<br>(N·m) |
|-----------------|------------------|------------------|----|----|-----|------|----|------------------------------------|
|                 | 最小孔径<br>Min·Bore | 最大孔径<br>Max·Bore |    |    |     |      |    |                                    |
| LK29-16-□□□-□□□ | 4                | 8                | 16 | 35 | 3.5 | 12.5 | M4 | 1.9                                |
| LK29-26-□□□-□□□ | 7                | 14               | 26 | 50 | 4.5 | 17   | M5 | 3.7                                |

说明:

1. 对于上表以外的孔径, 如需定货, 可另行提供服务, 请向本公司洽询。
2. 对方安装轴公差为h7,h8级, 如轴公差为其他公差, 给公差要求厂家定做。

Note:

1. Please contact us for the bore size that is out of the standard scope.
2. Our standard bore size can support relative shaft tolerance at h7 or h8, if your shaft tolerance is not in the scope, please contact us.

## 标准孔径 Standard Bore Diameter

单位 (unit): mm

| 型号<br>Model     | 标准孔径 Standard Bore Diameter · d1·d2 (mm) |   |   |      |   |   |   |       |    |    |    |    |
|-----------------|--|---|---|------|---|---|---|-------|----|----|----|----|
|                 | 4  | 5 | 6 | 6.35 | 7 | 8 | 9 | 9.525 | 10 | 11 | 12 | 14 |
| LK29-16-□□□-□□□ | •  | • | • | •    | • | • |   |       |    |    |    |    |
| LK29-26-□□□-□□□ |  |   | • | •    | • | • | • | •     | •  | •  | •  | •  |

※标准孔加工产品不带键槽。如需加工键槽, 请向本公司洽询。

※ If you're using a keyed shaft, please contact us for the keyway.

## 技术参数 Specifications

单位 (unit): mm

| 型号<br>Model     | 额定扭矩<br>Rated Torque<br>(N.m) | 最高转速<br>Max.Rotational<br>Frequency<br>(rpm) | 转动惯量<br>Moment<br>of Inertia<br>(Kg.m <sup>2</sup> ) | 静态扭矩刚性<br>Static Torsional<br>Stiffness<br>(N.m/rad) | 容许径向偏差<br>Errors of<br>Eccentricity<br>(mm) | 容许角向偏差<br>Errors of<br>Angularity<br>(°) | 重量<br>N.W.<br>(g) |
|-----------------|-------------------------------|--|--|--|---|--|-------------------|
| LK29-16-□□□-□□□ | 0.5                           | 3000   | 1.30×10 <sup>-6</sup>                                | 0.48   | 1   | 8  | 32                |
| LK29-26-□□□-□□□ | 1.5                           | 3000   | 1.25×10 <sup>-5</sup>                                | 1.70   | 1.2   | 8  | 112               |

说明:

1. 惯性力矩和重量按最大孔径计算。
2. 扭矩刚性为元件部份的测量值
3. 最高转速未考虑动平衡。

Note:

1. Moment of inertia and unit N.W. are based on the maximum bore size
2. Torsional stiffness values are based on the values of the elements only.
3. Max. rotation speed does not take dynamic balance into account.