

# LK23 系列

LK23 Series

## 使用注意事项:

### CAUTIONS:

1. 请务必遵守偏心, 偏角, 轴向的允许公差。
2. 螺栓类请务必按指定的扭矩拧紧。
3. 使用环境范围为-20°C至80°C。橡胶弹性体应避免在接触到水, 油, 酸, 碱等的环境中使用, 在直射阳光下使用或存放也可能导致寿命缩短, 请避免此类情况。
4. 插入安装轴前, 请勿拧紧夹紧螺栓。

1. Please observe the allowable tolerance of eccentricity, deflection angle and axial direction.
2. The bolts must be tightened according to the specified torque.
3. The range of service environment is - 20 to 80 ° C. Rubber elastomers should be kept away from use in the environment contacting with water, oil, acid, alkali, etc., and use or storage in direct sunlight may also shorten the service life, please avoid such situations.
4. Do not tighten the clamping bolt before inserting the mounting shaft.

## 安装方式:

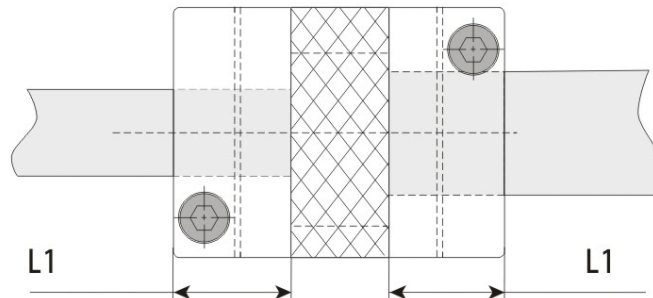
### INSTALLATION:

1. 确认联轴器的夹紧螺栓有无松动, 去除轴及联轴器内径面的锈迹, 灰尘及油等。特别是, 对联轴器摩擦系数有显著影响的各类润滑脂, 绝不可有粘附, 安装前, 请把轴, 孔清理干净。

Confirm whether the clamping bolt of the coupling is loose or not, remove rust, dust and oil on the inner surface of the shaft and coupling. Especially, all kinds of grease that have significant influence on the friction coefficient of the coupling must not be adhered. Clean the shaft and hole before installation.

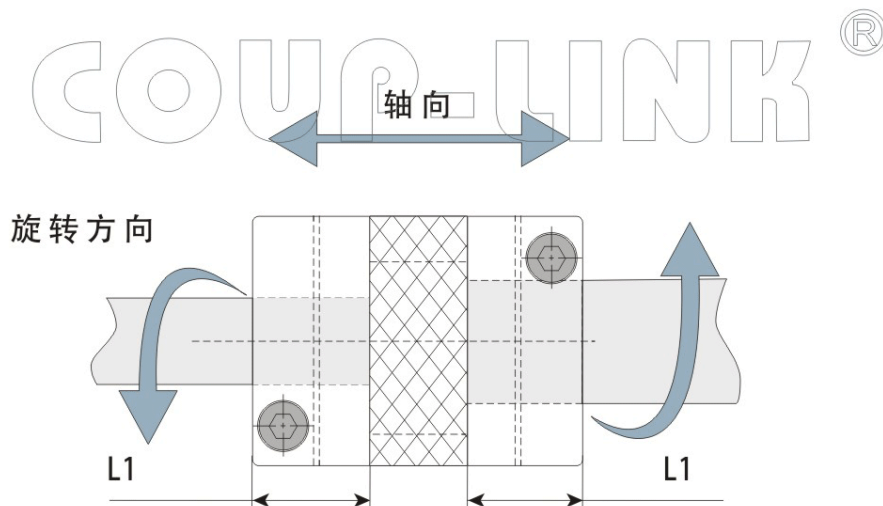
2. 请将联轴器插入电动机轴。插入长度必须接近联轴器的边节长度, 使夹紧端面跟轴有足够大接触面, 保证足够摩擦力。

Please insert the coupling into the motor shaft. The insertion length must be close to the side section length of the coupling, so that the clamping end has a large enough contact surface with the shaft to ensure sufficient friction.



3. 在夹紧螺栓处于松动状态下，请确认联轴器是否能沿轴向和旋转方向轻微移动。如果无法顺畅移动，请重新调整两轴的定心。该方法推荐用作左右同心度的简易确认方法，如果无法使用同样的确认方法，请使用其他测量方法确认安装精度。

When the clamping bolt is loose, please confirm whether the coupling can move slightly along the axial direction and rotation direction. If the movement is not smooth, please readjust the centering of the two shafts. This method is recommended as a simple confirmation method of left and right concentricity. If the same confirmation method cannot be used, please use other measurement methods to confirm the installation accuracy.



4. 确认联轴器能沿轴向和旋转方向顺畅移动后，请将两根夹紧螺栓拧紧。拧紧螺栓时，请使用经过校准的扭力扳手，按参数表上所列的夹紧螺栓紧固扭矩上紧螺栓。

After confirming that the coupling can move smoothly along the axial direction and rotation direction, please tighten the two clamping bolts. When tightening the bolts, use the calibrated torque wrench to tighten the bolts according to the tightening torque of the clamping bolts listed in the parameter table.

5. 作为夹紧螺栓的初期防松措施，建议运行一段时间后，再次使用正确紧固扭矩进行再拧紧。

As an initial anti loose measure of clamping bolt, it is recommended to use correct tightening torque again for re tightening after a period of operation.

# LK23 系列

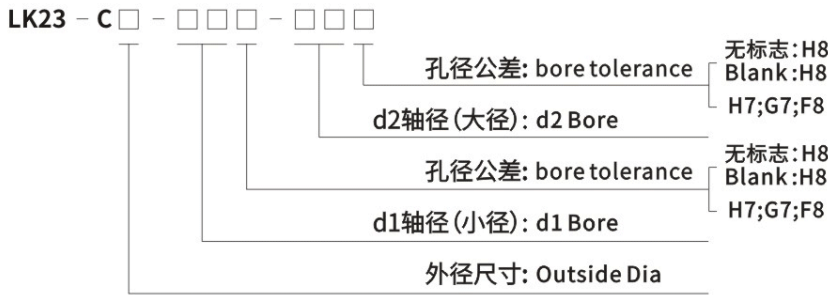
LK23 Series High Response Coupling

## 特点 Features

- 一体成型的联轴器, 响应快
- 中间橡胶弹性体, 能吸收振动
- 电气绝缘
- Integral forming coupling, fast response
- Intermediate rubber elastomer can absorb vibration
- Electrical insulation



## 选型举例: Ordering Information



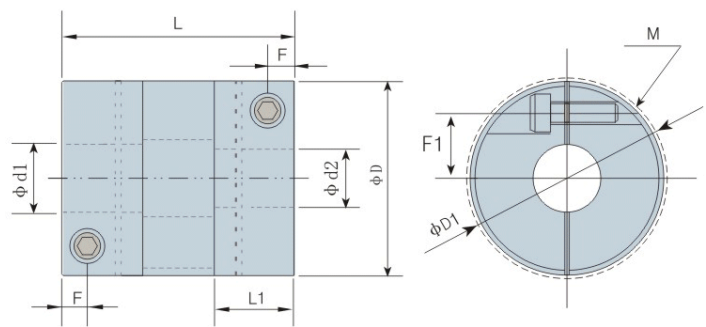
## 例: LK23-C40-14-18

LK23: 系列号, 材料为铝合金  
 C40: 外径尺寸: 40mm, 夹紧螺丝固定  
 14: d1孔径为: 14mm, 孔公差为H8  
 18: d2孔径为: 18mm, 孔公差为H8  
 孔径公称请按照d1(小径)-d2(大径)的顺序标示

### Example: LK23-C40-14-18

LK23: Series NO, Material: Aluminum Alloy  
 C40: Outside Dia: 40mm, Clamp Type  
 14: d1 Bore: 14mm, H8  
 18: d2 Bore: 18mm, H8

Please mark the bore diameter in the order of d1 (minor diameter) - d2 (major diameter)



## 外型尺寸 Dimensions

单位 (unit): mm

型号 Model	d1 · d2		ΦD	L	ΦD1	F	F1	L1	M	拧紧力矩 Tightening Torque (N · m)
	最小孔径 Min · Bore	最大孔径 Max · Bore								
LK23-C15S-□□□-□□□	3	6	15	18	16	2.1	5	6.4	M1.6	0.23-0.28
LK23-C15-□□□-□□□	3	6	15	23	16	2.1	5	6.4	M1.6	0.23-0.28
LK23-C20-□□□-□□□	4	8	20	26	20	2.5	7	7.6	M2.0	0.4-0.5
LK23-C25-□□□-□□□	5	12	25	32	27	3.0	8.5	9.6	M2.5	1.0-1.1
LK23-C30-□□□-□□□	8	15	30	36	32	3.5	10.5	10.9	M3	1.5-1.9
LK23-C35-□□□-□□□	8	16	35	38	35	3.75	12.5	11.8	M3	1.5-1.9
LK23-C40-□□□-□□□	10	20	40	48	41.5	5.5	14.5	17	M5	7.0-8.5
LK23-C45-□□□-□□□	12	22	45	50	47	6	16.25	17	M5	7.0-8.5

说明:

1. 对于上表以外的孔径, 如需定货, 可另行提供服务, 请向本公司洽询。
2. 对方安装轴公差为h7, h8级, 如轴公差为其他公差, 请提供公差要求由厂家定做。

Note:

1. For other bore sizes which are not listed above, customized ones are available, please consult us.
2. Standard bore tolerance is for the shaft with tolerance h7 or h8, if other tolerance is required, please consult us.

## 标准孔径 Standard Bore Diameter

单位 (unit): mm

型号 Model	标准孔径 Standard Bore Diameter · d1 · d2 (mm)																
	3	4	5	6	6.35	8	9	9.525	10	11	12	14	15	16	18	19	20
LK23-C15S-□□□-□□□	●	●	●	●													
LK23-C15-□□□-□□□	●	●	●	●													
LK23-C20-□□□-□□□		●	●	●	●	●											
LK23-C25-□□□-□□□			●	●	●	●	●	●	●	●	●						
LK23-C30-□□□-□□□						●	●	●	●	●	●	●	●				
LK23-C35-□□□-□□□						●	●	●	●	●	●	●	●	●			
LK23-C40-□□□-□□□									●	●	●	●	●	●	●	●	●
LK23-C45-□□□-□□□											●	●	●	●	●	●	●

# 技术参数 Specifications

单位 (unit): mm

型号 Model	额定扭矩 Rated Torque (N.m)	最高转速 Max. Rotational Frequency (rpm)	惯性力矩 Moment of Inertia (Kg.m <sup>2</sup> )	静态扭矩刚性 Static Torsional Stiffness (N.m / rad)	容许径向偏差 Errors of Eccentricity (mm)	容许角向偏差 Errors of Angularity (°)	容许轴向偏差 Errors of shaft End-play (mm)	重量 N.W. (g)
LK23-C15S-□□□-□□□	1.1	42000	$1.86 \times 10^{-7}$	110	0.15	1.5	±0.2	6.8
LK23-C15-□□□-□□□	1.1	42000	$2.41 \times 10^{-7}$	110	0.15	1.5	±0.2	7.5
LK23-C20-□□□-□□□	2.1	33000	$8.59 \times 10^{-7}$	240	0.15	1.5	±0.2	15
LK23-C25-□□□-□□□	4.0	25000	$2.60 \times 10^{-6}$	390	0.15	1.5	±0.2	28
LK23-C30-□□□-□□□	6.3	21000	$6.25 \times 10^{-6}$	590	0.2	1.5	±0.3	47
LK23-C35-□□□-□□□	8.0	18000	$1.17 \times 10^{-5}$	890	0.2	1.5	±0.3	65
LK23-C40-□□□-□□□	13.5	16000	$2.75 \times 10^{-5}$	1100	0.2	1.5	±0.3	112
LK23-C45-□□□-□□□	18	14000	$4.43 \times 10^{-5}$	1300	0.2	1.5	±0.3	148

说明:

1. 惯性力矩和重量按最大孔径计算。
2. 最高转速未考虑动平衡。

Note:

1. Moment of inertia and weight are based on the maximum size bores
2. The maximum speed does not consider dynamic balance.

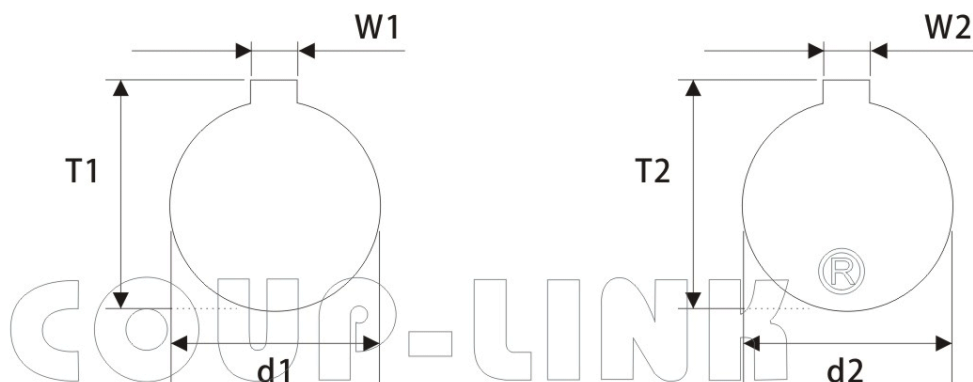
环境温度高于30°C时, 请根据下表的温度修正系数调整常用扭矩及最大扭矩:

When the ambient temperature is higher than 30 ° C, please adjust the common torque and the maximum torque according to the temperature correction coefficient in the table below:

环境温度 Environment temperature	温度修正系数 Temperature correction factor
-20 ° C-30 ° C	1.0
30 ° C-40 ° C	0.8
40 ° C-60 ° C	0.7
60 ° C-80 ° C	0.5

**LK23 系列**  
LK23 Series

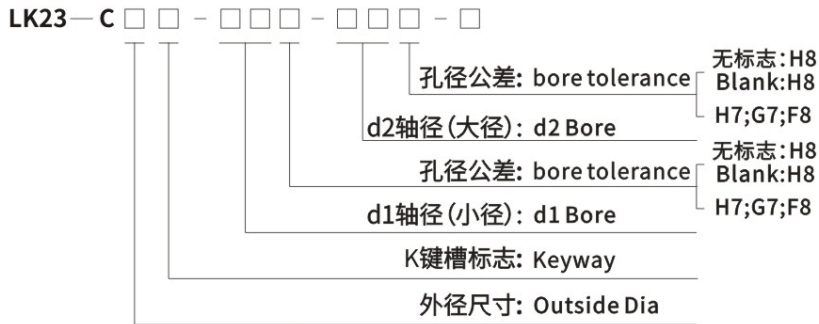
夹紧螺丝加键槽固定, 键槽尺寸  
Clamp Keyway Type



键槽标准尺寸表(国标JS9): Standard Dimension Table of Keyway(Js9) 单位 (unit):mm

孔径 $\phi d_1$ $\phi d_2$ Bore	键槽宽度 Keyway W1.W2 (mm)	键槽高度 Keyway T1.T2 (mm)	孔径 $\phi d_1$ $\phi d_2$ Bore	键槽宽度 Keyway W1.W2 (mm)	键槽高度 Keyway T1.T2 (mm)
6	2	7	32	10	35.3
8	2	9	35	10	38.3
9	3	10.4	38	10	41.3
10	3	11.4	40	12	43.3
11	4	12.8	42	12	45.3
12	4	13.8	45	14	48.8
13	5	15.3	48	14	51.8
14	5	16.3	50	14	53.8
15	5	17.3	55	16	59.3
16	5	18.3	56	16	60.3
17	5	19.3	60	18	64.4
18	6	20.8	65	18	69.4
19	6	21.8	70	20	74.9
20	6	22.8	75	20	79.9
22	6	24.8	80	22	85.4
24	8	27.3	85	22	90.4
25	8	28.3	90	25	95.4
28	8	31.3	95	25	100.4
30	8	33.3	100	28	106.4

## 选型举例：Ordering Information



### 键槽说明:

两端孔都加键槽时,在联轴器外径后面加K表示,只有一端孔加键槽时,K加在要加键槽那端孔的公差后面,前面外径后不用加K,非标键槽必须提供键槽图纸

### KEYWAY NOTE:

when both bores are with keyway, code "K" should be added after the outer diameter of the coupling. If only one bore is with keyway, code "K" should be added after the tolerance code of the relative bore size only (Do not add to the outer diameter). If any customized dimension required, please provide your drawings.

## 例:LK23-C30K-10-14

LK23: 系列号,材料为铝合金  
C30: 外径尺寸: 30mm,夹紧螺丝固定  
10: d1孔径为: 10mm,孔公差为H8  
14: d2孔径为: 14mm,孔公差为H8  
K: 表示10,14两孔都加标准键槽

### Example:LK23-C30K-10-14

LK23: Series NO, Material: Aluminum alloy  
C30: Outside Dia:30mm, Clamp Type  
10: d1 Bore: 10mm, H8  
14: d2 Bore: 14mm, H8  
K: 10,14 bore standard keyway

## 例:LK23-C30-10K-14

LK23: 系列号,材料为铝合金  
C30: 外径尺寸: 30mm,夹紧螺丝固定  
10: d1孔径为: 10mm,孔公差为H8  
14: d2孔径为: 14mm,孔公差为H8  
K: 表示10端孔加标准键槽

### Example: LK23-C30-10K-14

LK23: Series NO, Material: Aluminum alloy  
C30: Outside Dia:30mm, Clamp Type  
10: d1 Bore: 10mm, H8  
14: d2 Bore: 14mm, H8  
K: 10bore standard keyway